



Gofal Cymdeithasol **Cymru**
Social Care **Wales**

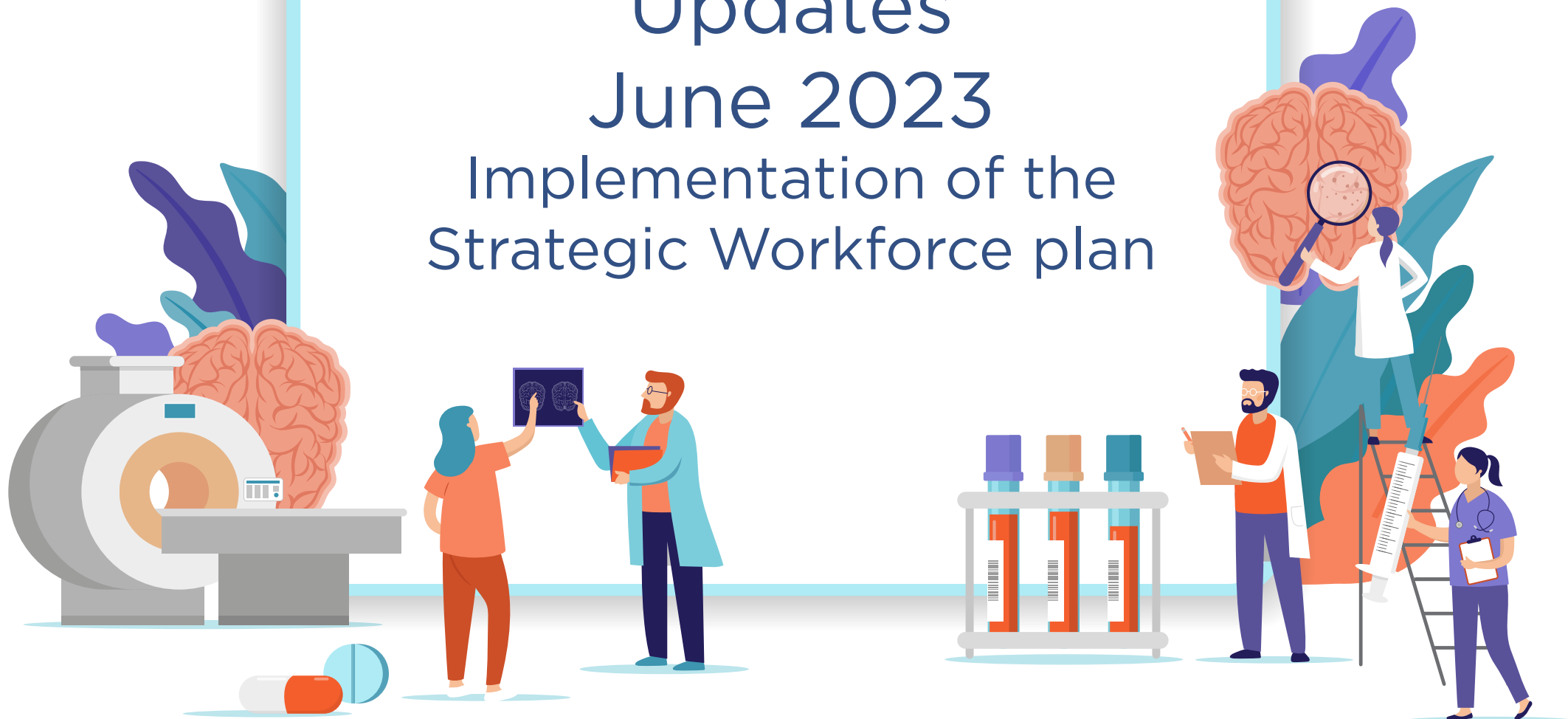


GIG
CYMRU
NHS
WALES

Addysg a Gwellu Iechyd
Cymru (AaGIC)
Health Education and
Improvement Wales (HEIW)

Updates June 2023

Implementation of the Strategic Workforce plan



New Starters

Recovery College

Implementation Plan

Team Manager Programme

RCoP Conference

Get In Touch

1 / 8

Contents

1 ~ New Starters.....	3
2 ~ Recovery College	4
3 ~ Implementation Plan	5
4 ~ Team Manager Programme.....	6
5 ~ Royal College of Psychiatrists Conference	7
6 ~ Get in touch	8



1 ~ New Starters



Jane Rees

Workforce Project Manager



Ruth Tofton

Workforce Project Management



Helen O'Hara

Workforce Project Manager



Kay Wilkinson

Attraction Campaign Specialist



Toni Alexander

Programme Support Officer



Emma Price

Programme Support Officer

2 ~ Recovery College

Our lived-experience lead has now drawn up a business case to expand the recovery college model across Wales.

The business case includes options for each area to introduce their own recovery college model and recommendations around training and staffing.

This will progress through various governance stages before review by Welsh Government later in the year.



3 ~ Implementation Plan

The programme team have drawn up a detailed implementation plan which will explain what significant milestones that we hope to meet and how we intend to meet the objectives of each action during the coming year.

It also contains who the responsible officers are for each area and if there is any budget assigned.

The plan will be published during the summer.



4 ~ Team Manager Programme

Working with a group of practitioners, our colleagues in Social Care Wales and the Institute of Public Care we have drawn up a first draft of an accredited programme for mental health team managers.

This will now be consulted on and finalised over the coming months with a view to rolling out to some groups next year.



5 ~ Royal College of Psychiatrists Conference

The programme team were out promoting the plan at the RCPsych conference in Techniquet, Cardiff Bay earlier in May.



6 ~ Get in touch

<https://heiw.nhs.wales/SMHWP>

HEIW.MentalHealthWorkforcePlan@wales.nhs.uk

